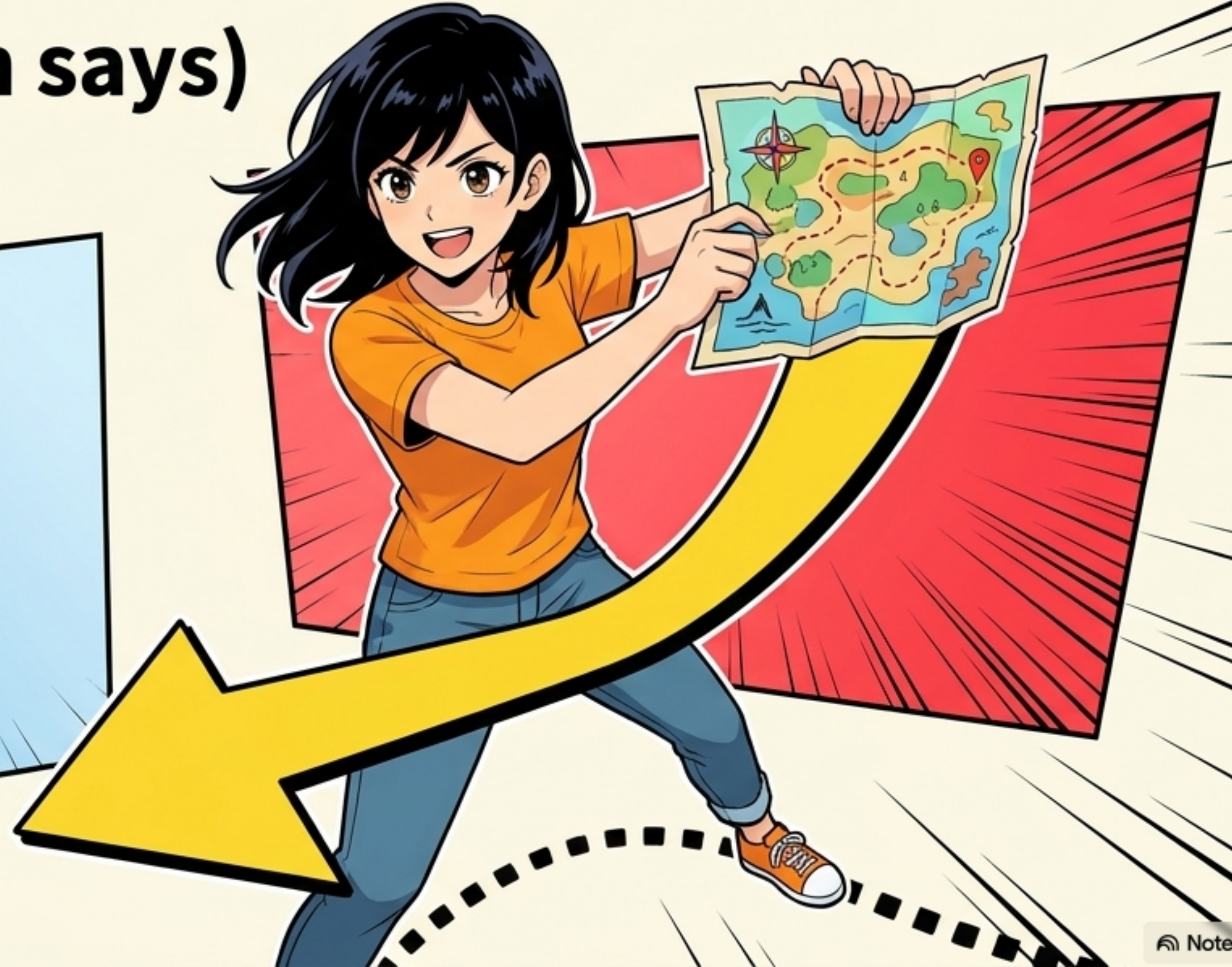
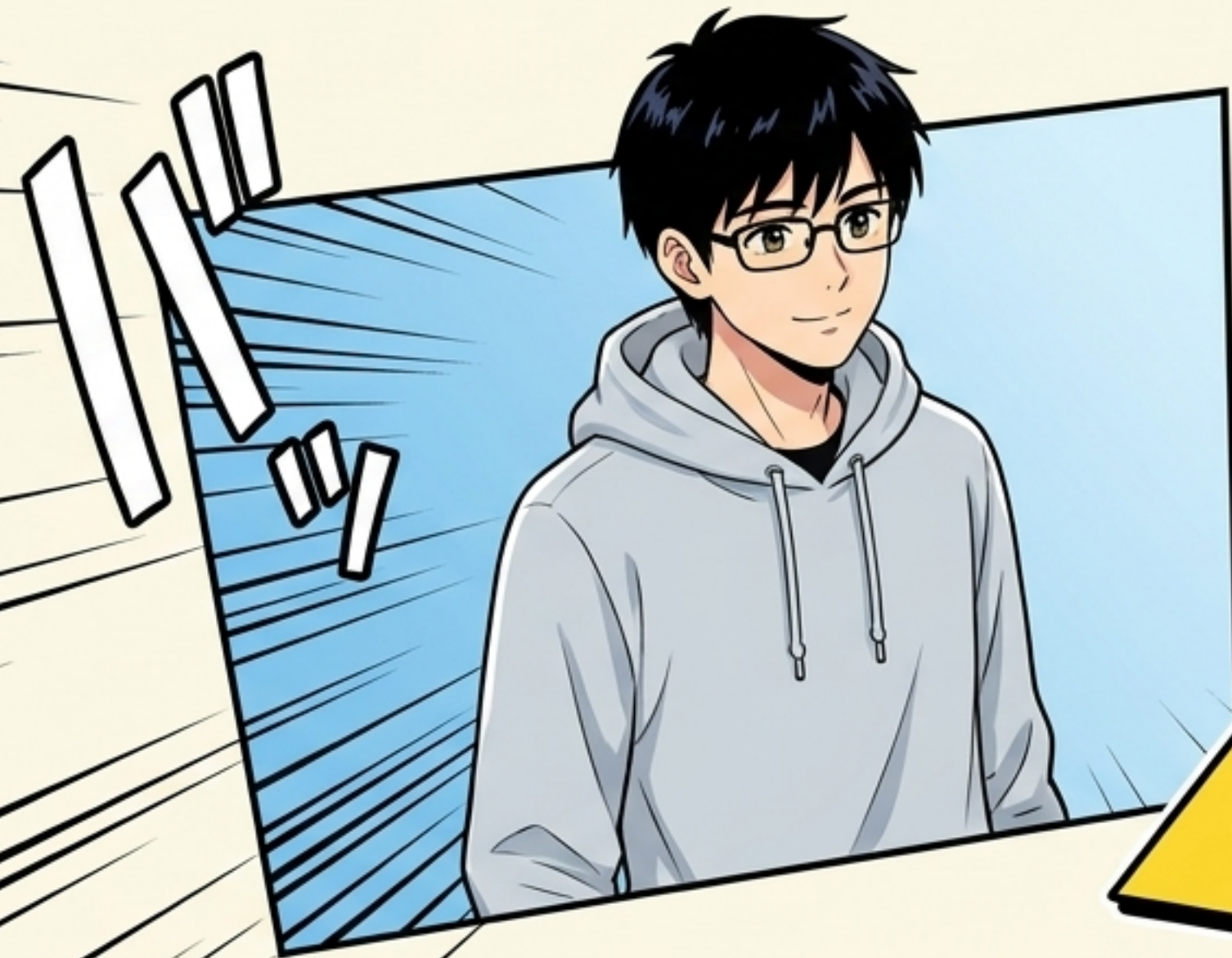
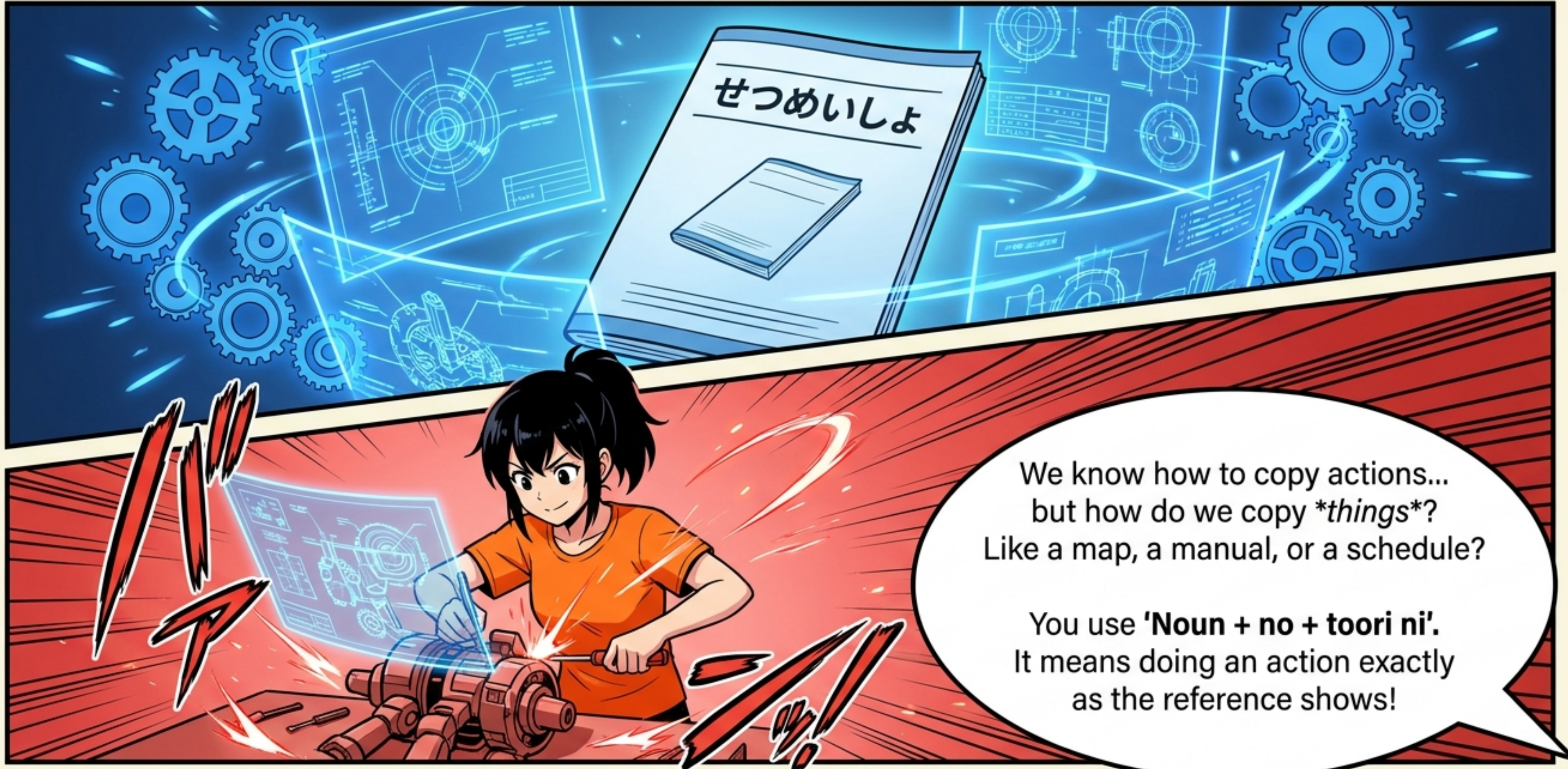


Noun + の + とおりに

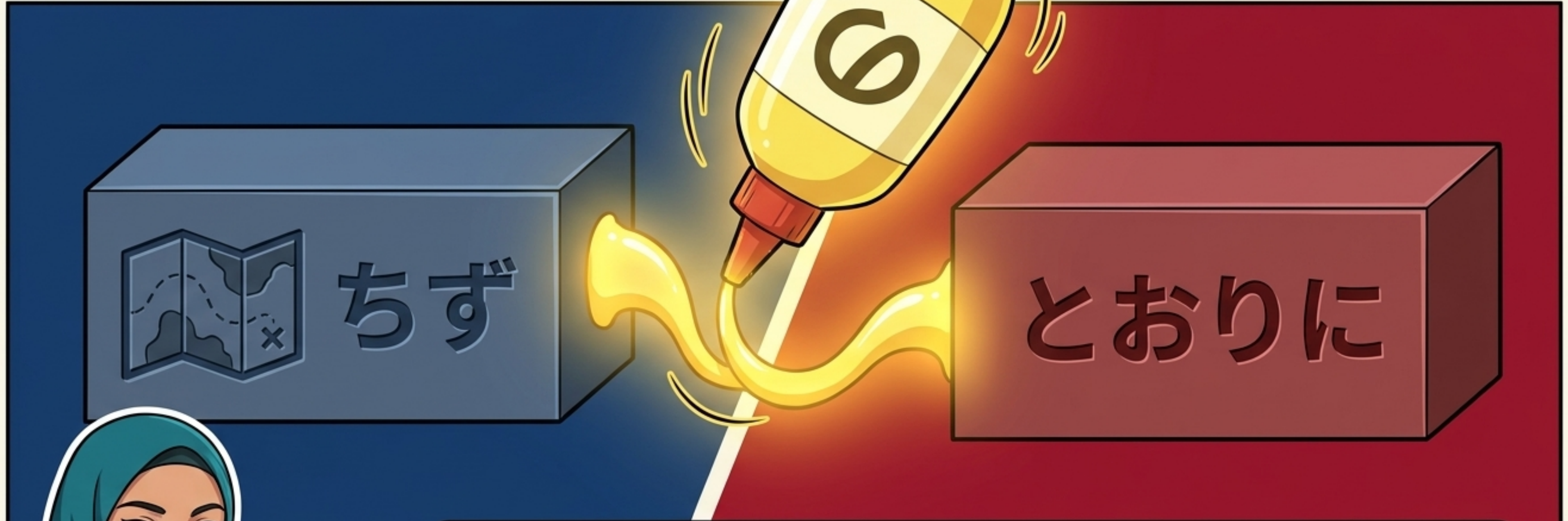
(Exactly as the Noun says)



Following the Reference

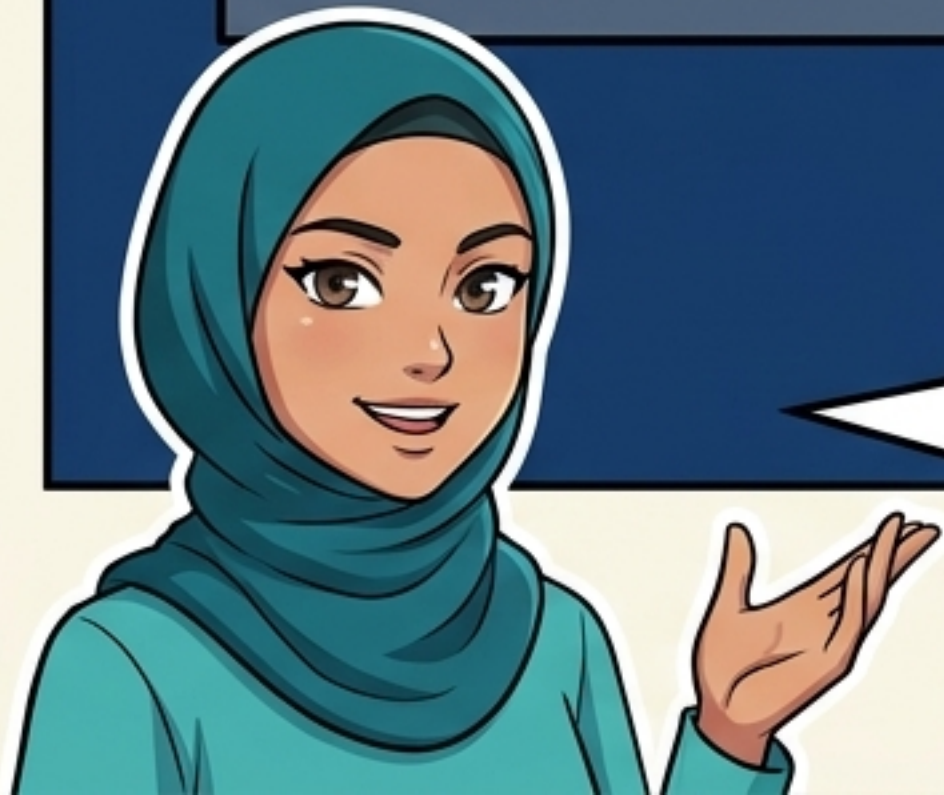


The "NO" Glue

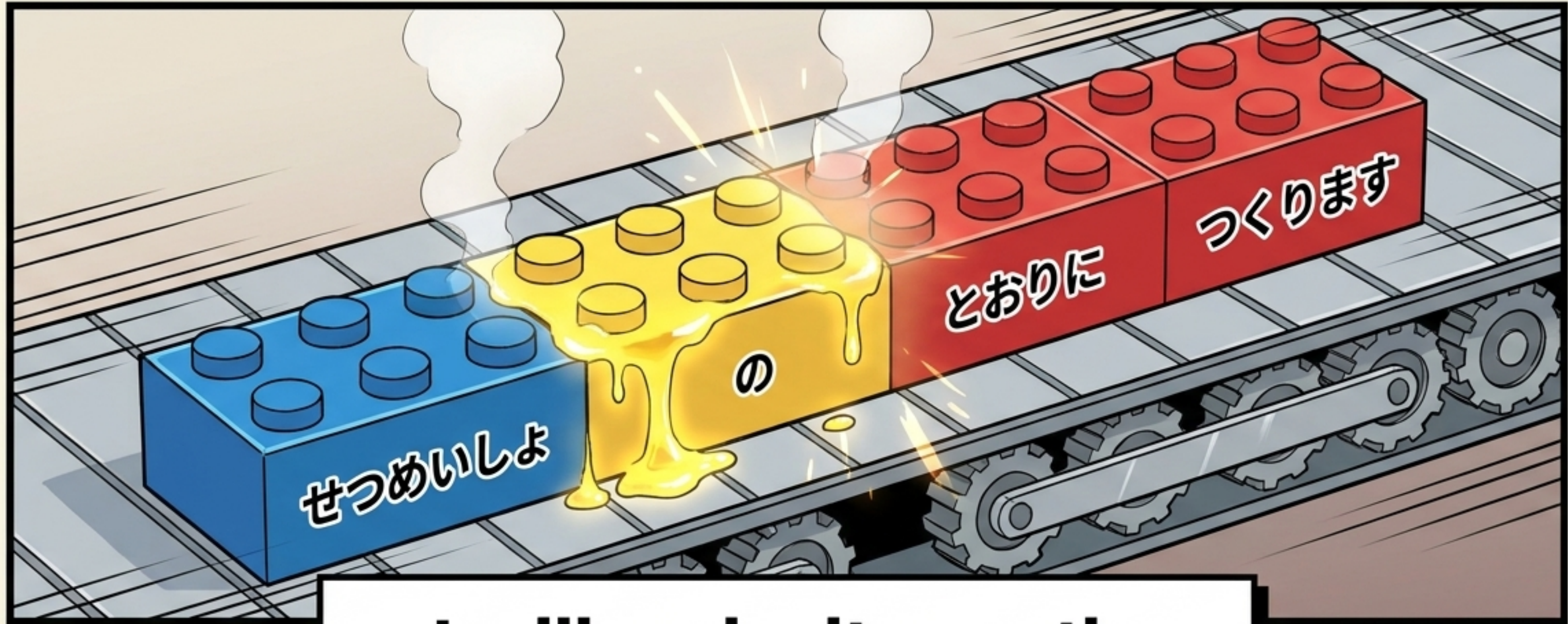


Because 'Toori' acts like a noun, you need glue to stick two nouns together!

Noun + の + とおりに




Assembling the Perfect Copy



I will make it exactly as the manual says.

Raya's Hack: To NO or not to NO?



の+とおり

どおり

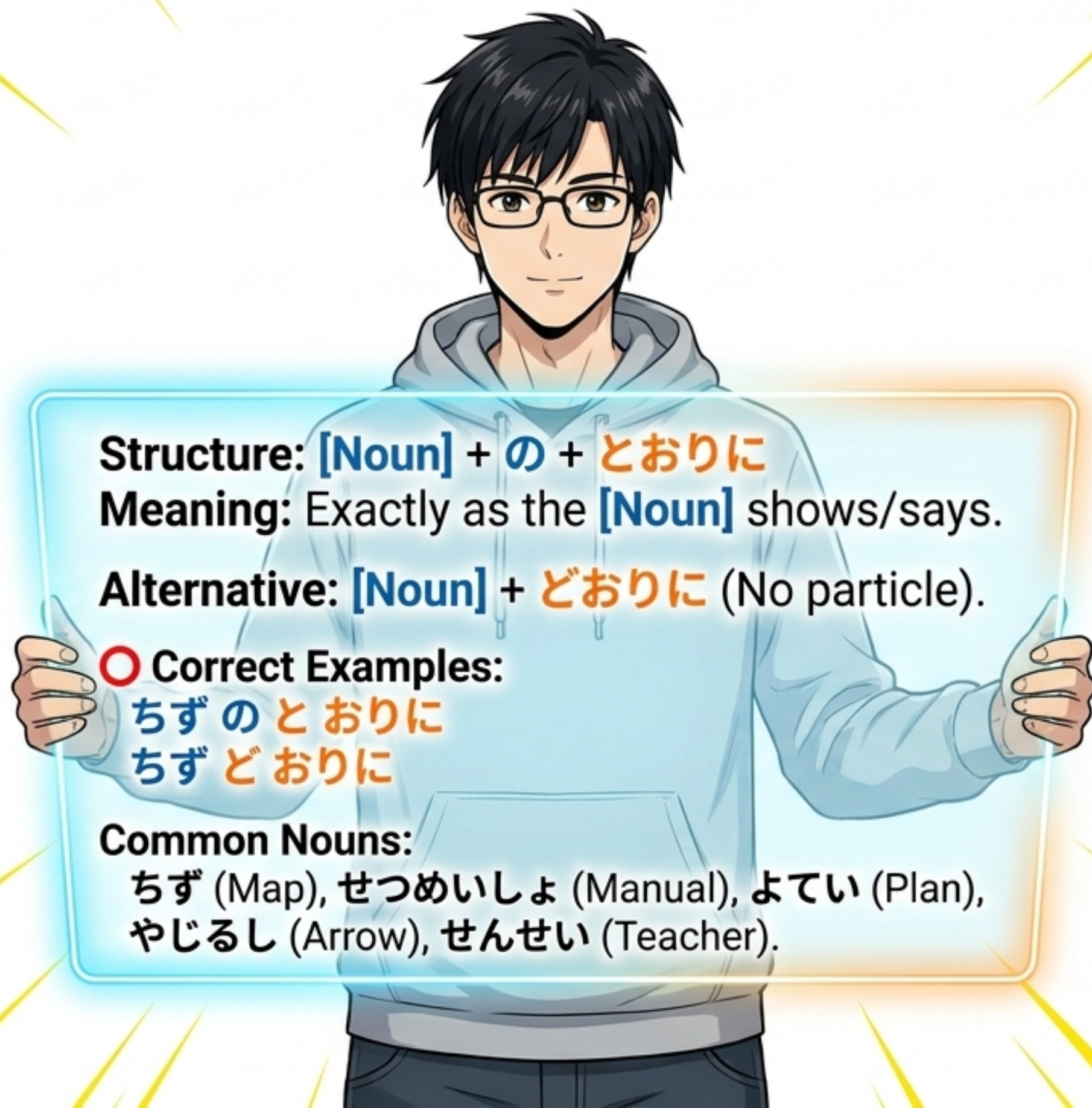
Keep the 'NO'? Keep the 'T' sound!
Drop the 'NO'? Change to a 'D' sound!
Both mean the exact same thing.

DON'T DO THIS!

「ちずのどおりに！」
(~~X~~ Mixing the T and D)

Trap triggered!
If you use 'no', it
must be 'toori'.
If you drop 'no',
it's 'doori'!

The “Toori-ni” Cheat Sheet



Structure: [Noun] + の + とおりに

Meaning: Exactly as the [Noun] shows/says.

Alternative: [Noun] + どおりに (No particle).

○ **Correct Examples:**

ちずのとおりに

ちずどおりに

Common Nouns:

ちず (Map), せつめいしょ (Manual), よてい (Plan),
やじるし (Arrow), せんせい (Teacher).