

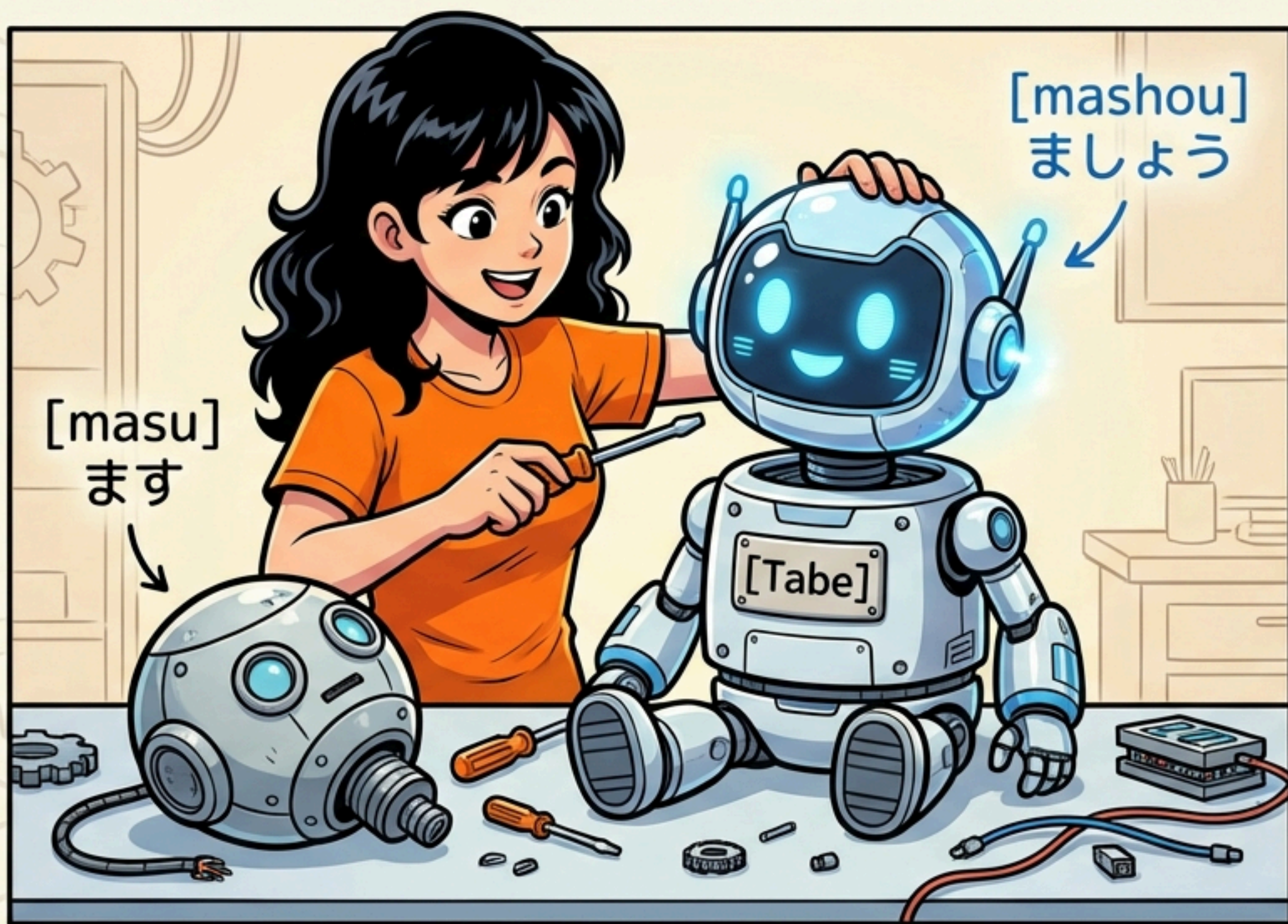


The Friendly Invitation (楽しいお誘い)



'Masu' is a statement about yourself. 'Mashou' involves the listener. It's an energetic invitation! ookLM

The 'Masu' Swap



Iki-masu → Iki-mashou
(Let's go)

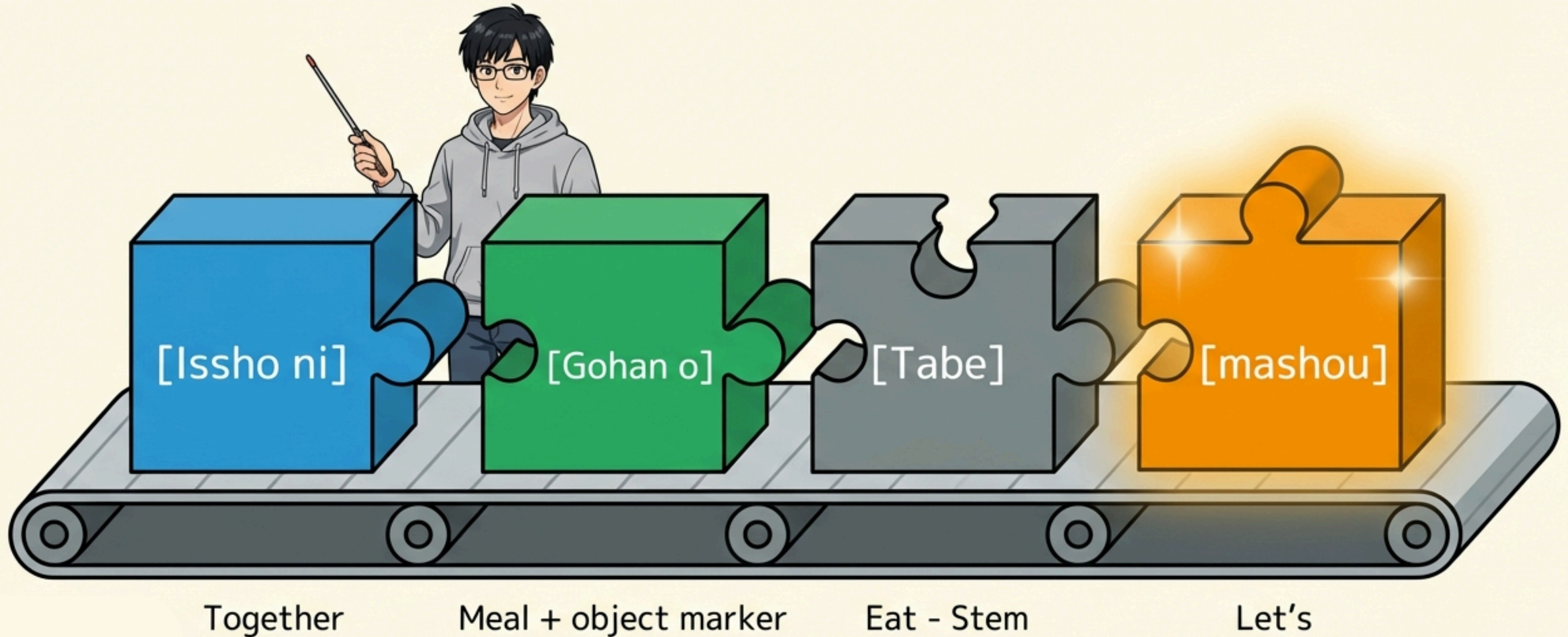
Nomi-masu → Nomi-mashou
(Let's drink)

Benkyou shi-masu
→ Benkyou shi-mashou
(Let's study)

Easy! Cut 'Masu',
Add 'Mashou'.

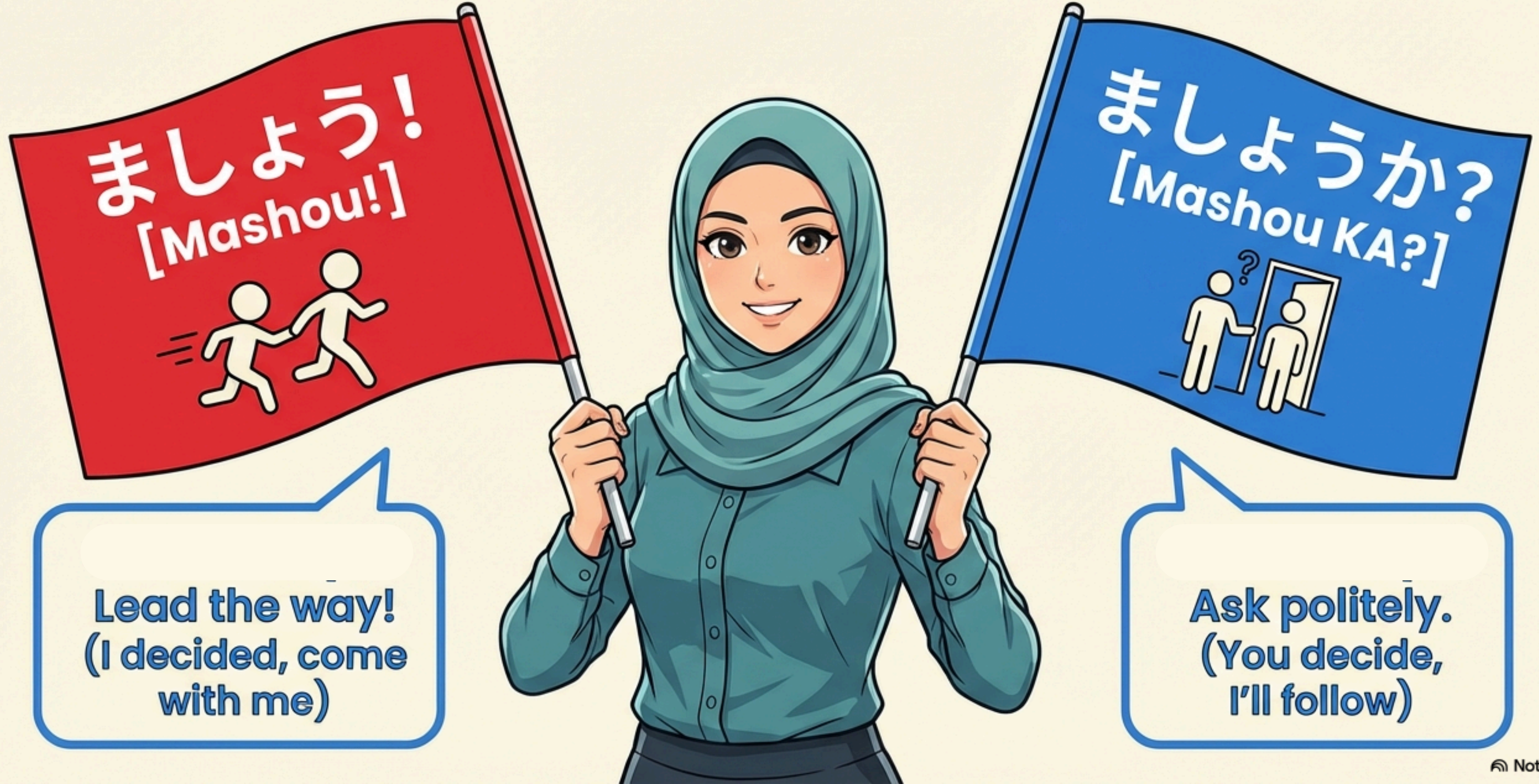


Building the Invitation Sentence



一緒に ご飯を 食べましょう。(Let's eat together.)

Raya's Hack: Leading vs. Asking



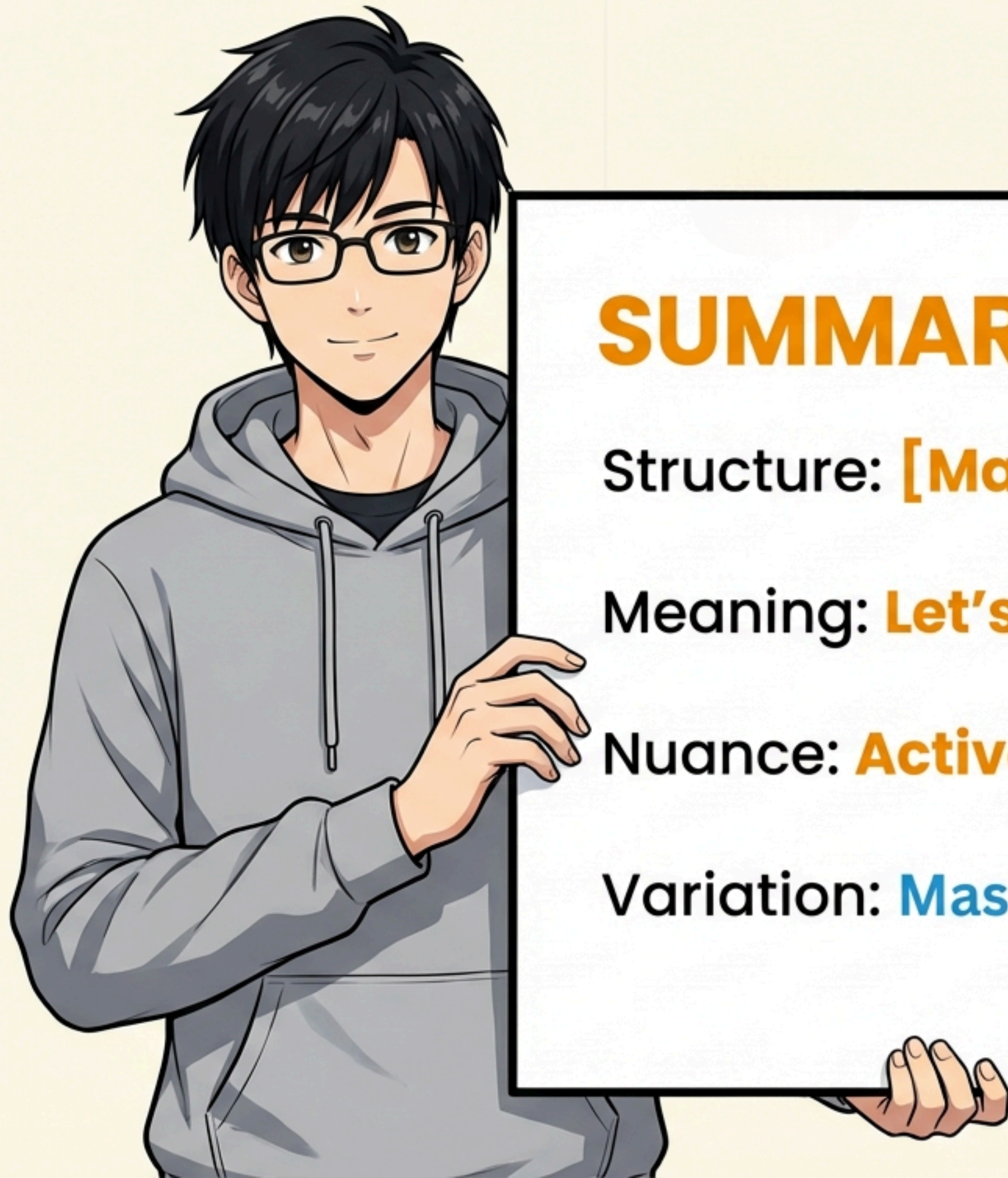


Don't do this! ❌

**Poppins
ExtraBld**



❌	Taberu mashou (Dictionary Form Error)
✅	Tabe mashou (Stem Form Correct)



SUMMARY: Polite Volitional

Structure: **[Masu-stem] + mashou**

Meaning: **Let's** (do something).

Nuance: **Active invitation** (Leadership).

Variation: **Mashou ka?** (**Shall we?** - Polite Offer)